

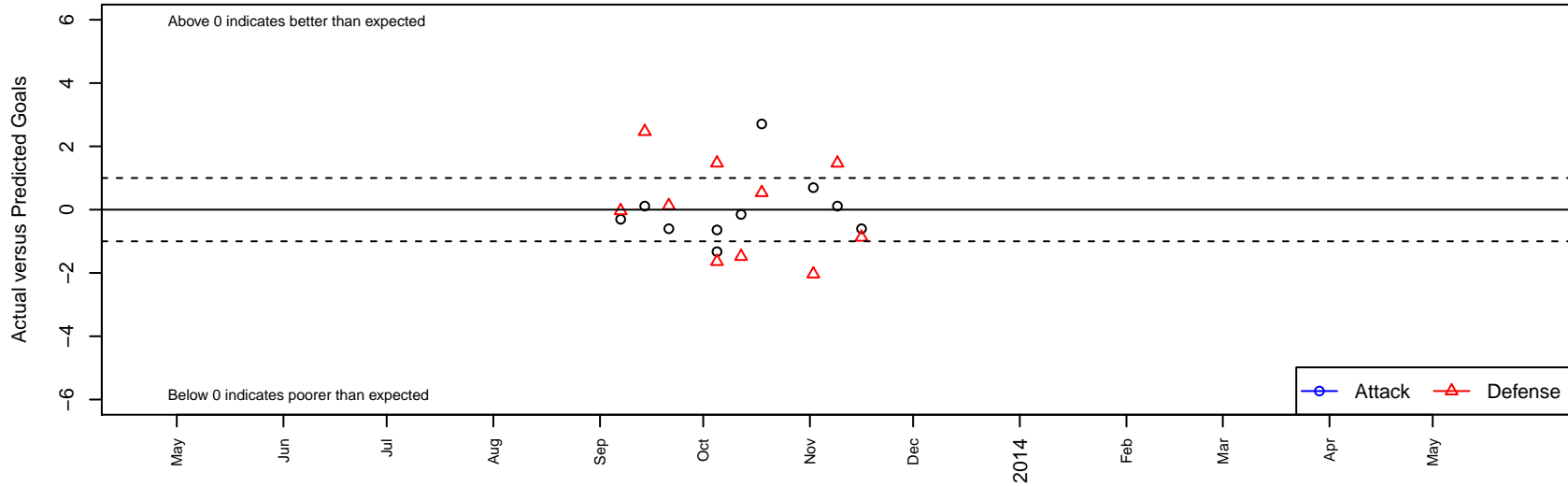
FC Elk Grove 03 Navy G02

, CAN
 G02 total strength=620
 attack=0.7 defense=0.41
 alt names used:
 FC Elk Grove 03 G Navy

Venues played:
 NorCal Premier F11 – Region 6 U11



FC Elk Grove 03 Navy G02
 Dots are actual minus expected GF (blue circles) and GA (red triangles).
 Blue line is smoothed change in attack strength. Red is smoothed change in defense strength.



	date	home		away		venue	pred.home	pred.away
2778	2013-11-16	Capital Athletic SA Boca G02	5	FC Elk Grove 03 Navy G02	1	NorCal Premier FI1 – Region 6 U11	4.13	1.60
2668	2013-11-09	IR Academy Storm G02	3	FC Elk Grove 03 Navy G02	1	NorCal Premier FI1 – Region 6 U11	4.47	0.89
2525	2013-11-02	FC Elk Grove 03 Navy G02	1	Placer United 03 Red G02	7	NorCal Premier FI1 – Region 6 U11	0.30	4.96
2214	2013-10-18	Sacramento United Extreme Red G02	1	FC Elk Grove 03 Navy G02	5	NorCal Premier FI1 – Region 6 U11	1.54	2.29
2088	2013-10-12	San Juan SC 03 Spirits Blue G02	3	FC Elk Grove 03 Navy G02	1	NorCal Premier FI1 – Region 6 U11	1.52	1.15
1891	2013-10-05	FC Elk Grove 03 Navy G02	0	Davis Legacy 03 Strikers G02	5	NorCal Premier FI1 – Region 6 U11	0.64	3.36
1895	2013-10-05	FC Elk Grove 03 Navy G02	0	Ajax United 03 Green G02	0	NorCal Premier FI1 – Region 6 U11	1.33	1.47
1575	2013-09-21	FC Elk Grove 03 Navy G02	1	Capital Athletic SA Boca G02	4	NorCal Premier FI1 – Region 6 U11	1.60	4.13
1408	2013-09-14	FC Elk Grove 03 Navy G02	1	IR Academy Storm G02	2	NorCal Premier FI1 – Region 6 U11	0.89	4.47
1232	2013-09-07	Placer United 03 Red G02	5	FC Elk Grove 03 Navy G02	0	NorCal Premier FI1 – Region 6 U11	4.96	0.30